



# GREENLAND MINERAL RESOURCES STRATEGY 2025 - 2029

**A sustainable mineral resources sector**



**Naaja H. Nathanielsen**

Minister of Business, Trade, Mineral Resources,  
Justice, and Gender Equality

## **Preface**

**Our society depends on things that are only possible because of mining. Most of the things around us that we use on a daily basis come from mining. The mineral resource industry is therefore a necessary prerequisite for the continued development of the global community. The mineral resource industry contributes to new greener technologies, but also to existing industries such as construction, infrastructure and transportation.**

The global need for minerals can create jobs and growth locally and nationally, contributing to a more sustainable and robust economic development for us all.

### **Sustainability and society**

The consideration of nature in all phases of a mineral resource project's development means a lot to us, and also to investors. Locally and globally, it is important that the development of the mineral resource industry is carried out in an environmentally and socially responsible way. We also demand decent wages and employment conditions for employees in the mineral resource industry and we continue to ensure high standards of education in a gender-diverse labor market.



Anchoring in our towns and settlements is crucial for the development of the industry and we need the local support. This requires transparency and visibility in the tasks and processes the authorities are responsible for. During the strategy period, we will also strengthen contact between authorities and companies through physical meetings in the regions where the industry and projects are located.

### **Global investment and education**

The global demand for mineral resources is expected to increase the focus on Greenland's subsurface. But it's not enough to have a good geology that attracts attention. Developing mining projects is capital-intensive over a very long period of time, so there is a need to reduce the risk investors take on. This task must be partly solved politically and not only by the markets. Working with the investment framework will therefore be an important task in the new strategy period. In addition, the work to streamline administration must continue.

Nationally, there will be a focus on reaching out to the wider population to attract locals to positions in the sector. This applies to hiring at all levels, targeting both men and women. Finally, strengthening and growing the small-scale sector is a clear priority.

### **International cooperation and visibility**

In the coming strategy period, we will strengthen international collaborations and agreements. We already cooperate bilaterally and multilaterally with several countries and associations. This must be continued and expanded so that we increase our interface with both mineral importing countries, investors and with industries that can purchase our minerals.

The work to develop the country's mineral resource sector is basically internationally oriented. But at the heart of all the work is the ambition to exploit the country's resources for the benefit of the population. The extraction of mineral resources must benefit Greenland.

# Contents

<b>Preface</b> . . . . .	<b>2</b>
<b>Summary: Focus areas, goals and initiatives</b> . . . . .	<b>5</b>
<b>Vision</b> . . . . .	<b>11</b>
<b>Focus area 1: Sustainability and society</b> . . . . .	<b>13</b>
Societal benefits . . . . .	13
Value creation in all parts of the lifecycle of a mine . . . . .	14
Climate and environment . . . . .	16
Education and workforce . . . . .	17
The gender diversified industry . . . . .	17
Digital presence . . . . .	18
<b>Focus area 2: Attractive investment frameworks</b> . . . . .	<b>20</b>
Investments . . . . .	20
Permits and requirements . . . . .	23
Administration and case management . . . . .	23
Organizational structure . . . . .	24
Local anchoring . . . . .	25
<b>Focus area 3: Critical Minerals</b> . . . . .	<b>26</b>
Critical Minerals . . . . .	26
<b>Target area 4: Geological mapping and geodata</b> . . . . .	<b>30</b>
Mapping . . . . .	31
Geophysics and Remote Sensing . . . . .	32
Landslides and surveillance . . . . .	34
Data generation and sharing . . . . .	35
Carbon Capture and Storage (CCS) . . . . .	35
Drill core storage . . . . .	37
<b>Concluding remarks</b> . . . . .	<b>38</b>
<b>Appendix 1: The Mineral Resources Strategy and the UN's Sustainable Development Goals</b> . . . . .	<b>39</b>
Focus area 1: Sustainability and society . . . . .	39
Focus area 2: Attractive investment frameworks . . . . .	41
Focus area 3: Critical Minerals . . . . .	43
Focus area 4: Mapping and geodata . . . . .	44

## Summary: Focus areas, goals and initiatives

In the mineral resources strategy four target areas are identified:

**Focus area 1: Sustainability and society**

**Focus area 2: Attractive frames for investment**

**Focus area 3: Critical minerals**

**Focus area 4: Geological mapping and geodata**

The four focus areas cannot stand alone, but together they support the political vision for the mineral resources area.

Within each area, a number of goals and concrete initiatives are described that will be implemented during the strategy period. The initiatives contain diverse tasks but anchor the goals in concrete actions.

The goals of the mineral resources strategy support several of the UN Sustainable development goals. Appendix 1 provides an overview of the Greenlandic indicators and initiatives and how they meet the UN Sustainable development goals.

## Focus area 1: Sustainability and society

<b>Goal</b>	Secure a sustainable societal development of the mineral resources industry.
<b>Concrete initiatives</b>	<ol style="list-style-type: none"> <li>1.1. Conduct at least two population surveys on attitudes towards the mineral resources industry.</li> <li>1.2. Focus on communicating the mineral resources sector, including education and job opportunities, and an increased dialogue with the population about the mineral resources sector, and the added value of mineral resources to society.</li> <li>1.3. Clarify the contribution of the mineral resources industry to the green transition through an information campaign.</li> <li>1.4. Dialogue with the mineral resources industry in relation to environmental and social factors and corporate behavior (ESG-area).</li> <li>1.5. Develop and implement initiatives that create better conditions for the industry by using renewable energy sources.</li> <li>1.6. Increase cooperation with research institutions with experience in the Arctic and renewable energy, such as hydropower and solar energy.</li> <li>1.7. Launch a campaign on education and job opportunities in the mineral resources industry targeting young people.</li> <li>1.8. Conduct baseline gender analysis and gender distribution statistics in the mineral resources industry.</li> <li>1.9. Conduct a gender equality campaign for jobs in the mineral resources industry with the aim of breaking down the gender segregated labor market.</li> <li>1.10. Develop gender equality guidelines for the mineral resources industry that show where companies can take action to increase integration of both genders in all parts of the companies' task portfolio.</li> <li>1.11. Develop and implement a new information and marketing strategy for the mineral resources sector.</li> </ol>

## Focus area 2: Attractive investment framework

<b>Goal</b>	We create sustainable, economic growth.
<b>Concrete initiatives</b>	<ul style="list-style-type: none"> <li>2.1. Continued marketing at the Prospectors &amp; Developers Association of Canada Convention (PDAC) and direct marketing to specific companies.</li> <li>2.2. Continue bi- and multilateral cooperation to support the projects' financing opportunities through e.g. export-import banks.</li> <li>2.3. Ongoing assessments of Greenland's tax and royalty model including benchmark analyses.</li> <li>2.4. Increase communication with licensees on laws and investment conditions.</li> <li>2.5. Ongoing facilitation of meetings between investment funds and the mineral resources industry.</li> <li>2.6. Development of a certification system for small-scale licensees in order to increase the value of the individual found mineral.</li> <li>2.7. Work for targeted tax agreements when there is a concrete need and such an agreement that can support the mineral resources industry.</li> <li>2.8. Increase ad-hoc cooperation between public authorities to support synergies between industries and, among other things, strengthen the infrastructure within transportation and internet communication.</li> <li>2.9. Update of the anti-corruption policy of the Ministry.</li> <li>2.10. Increased digitalization of administrative processes, including application processes.</li> <li>2.11. Updating of license procedures, standard terms and conditions, etc. in order to increase the flexibility of case processing, including increased communication with the industry about these.</li> <li>2.12. Implementation of a pilot project with the MLSA's physical presence in South Greenland during the field season.</li> <li>2.13. Conducting an analysis of the organizational structure of the Mineral Resources Administration (Department and Board) and possible implementation of a new organizational structure.</li> <li>2.14. Strengthening societal sustainability by reassessing the IBA agreements with the aim of establishing simple and transparent IBA agreements where all terms can be qualified and at the same time are aligned with the SIA.</li> <li>2.15. Ongoing facilitation of meetings between the public sector, the mineral resources industry, subcontractors and/or the public.</li> <li>2.16. Facilitation of an annual investment conference for global investors with the aim of creating insight into opportunities in Greenland.</li> </ul>

### Fokusområde 3: Kritiske mineraler

<b>Goal</b>	Strengthen partnerships for action and sustainable development.
<b>Concrete initiatives</b>	<ul style="list-style-type: none"><li>3.1. Implementation of the strategic cooperation with the EU on sustainable value chains, which will secure the buyer market for Greenland's mineral resources.</li><li>3.2. Working for the renewal of the 2019 agreement between Greenland and the US.</li><li>3.3. Strengthening international relations to develop projects with critical minerals, of which price and supply may be subject to political conditions.</li><li>3.4. Provide information about Greenland and support funding opportunities through the Minerals Security Partnership (MSP) Forum.</li></ul>



## Focus area 4: Geological mapping and geodata

<b>Goal</b>	<p>Improve the basis of data that helps to make exploration and investment in mineral resources activities attractive.</p> <p>Strengthen the prevention of natural disasters, especially with regards to landslides.</p>
<b>Concrete initiatives</b>	<ol style="list-style-type: none"> <li>4.1. Continued geological mapping on a scale of 1:100,000, prioritizing areas with a commercial interest.</li> <li>4.2. Continued implementation of scientific projects that generate new knowledge for the mineral resource industry to minimize companies' investment risk.</li> <li>4.3. Conduct a feasibility study to identify the geophysical data types to be collected and a prioritization of the order of mapping.</li> <li>4.4. Identification of funding opportunities for regional geophysical surveys and satellite data.</li> <li>4.5. Continued collaboration with research institutions, e.g. on geological mapping and landslides, and entering new agreements for the continued strengthening of geoscientific competences.</li> <li>4.6. Continued monitoring of unstable landslide areas.</li> <li>4.7. Implementation of a mapping program for landslides.</li> <li>4.8. Continued expansion of citizen information in the area of natural disasters, including the establishment of an interactive map with risk assessments and implementation of an information campaign on natural disasters.</li> <li>4.9. Develop a strategy for geoscientific assessment of the risk of landslides.</li> <li>4.10. Increased availability of geoscientific data via the homepage and the Greenland portal.</li> <li>4.11. Preparation and publication of a gemstone prospecting guide for North Greenland.</li> <li>4.12. Continue work on the Carbon Capture and Storage (CCS) strategy published in 2023.</li> <li>4.13. Establishment of a new core data system.</li> <li>4.14. Establishing a new drill core storage facility.</li> <li>4.15. Initiate registration of drill cores that are not yet registered in the system.</li> </ol>

## Introduction

The Mineral Resources Strategy sets the direction for the Government of Greenland's policies and initiatives in the mineral resources sector. The strategy replaces the Mineral Resources Strategy 2020 - 2024 and has been prepared by the Government of Greenland with input from industry and stakeholders.

The previous strategy consisted of five focus areas: 1. Strengthened geological knowledge sharing, 2. Efficient, predictable and transparent case handling, 3. Simplified transition from exploration to exploitation, 4. Sustainable development of the mineral resources industry and 5. Competitive tax and royalty model. Whereas the previous strategy worked on a more general strategic plan for the development of the mineral resources area, the goals for the mineral resources sector are concretized in the new Mineral Resources Strategy with measurable initiatives. In several areas, the initiatives build on the efforts in the previous strategy:

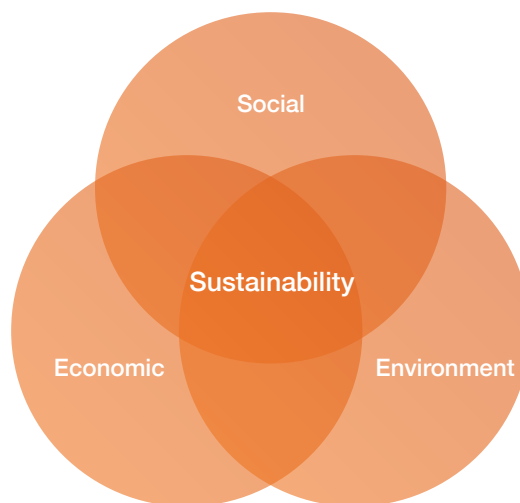
- Work continues to increase the amount and availability of geological data, as large parts of Greenland have not been mapped on the scale and data type demanded by industry.
- The focus will continue to be on efficient case handling, but the Mineral Resources Strategy 2025-2029 includes several initiatives aimed at creating attractive investment frameworks, as lack of investors is a global challenge for exploration companies, both large and small.
- Last but not least, the work for sustainable development of the mineral resources area began in the last strategy period. This work is being intensified and concretized, and at the same time supplemented with initiatives related to mineral resources defined as critical by our partners.

In the Mineral Resources Strategy 2025 - 2029, the Government of Greenland works with sustainability in a broad sense. We use the concept of sustainability in several branches of the mineral resources industry, including social sustainability, environmental sustainability and economic sustainability.

Social sustainability relates, among other things, to secure labor market conditions, regardless of gender, and the right and opportunity to education and work.

Environmental sustainability ensures a clear framework for a behavior that protects the nature and the environment as much as possible.

Economic sustainability creates economic growth with consideration for society so that development is done in an appropriate way.



*Figure 1: A sustainability model that shows the connection between economic, social and environmental sustainability.*

## **How to read the strategy**

The formulated focus areas have been identified through an assessment of which initiatives best support the vision and goals of the strategy.

At the end of each chapter, a number of concrete and action-oriented initiatives within each focus area are listed in bullet points. These actions are planned to be executed within the strategy period.

## **Vision**

### **Our minerals create growth and prosperity**

In the future, the mineral resources industry must form a larger part of the economy that is self-sustaining and multi-faceted: The mineral resources area must be developed into a supporting industry that secures jobs and increases welfare while protecting the health and safety of the population, nature and the environment.

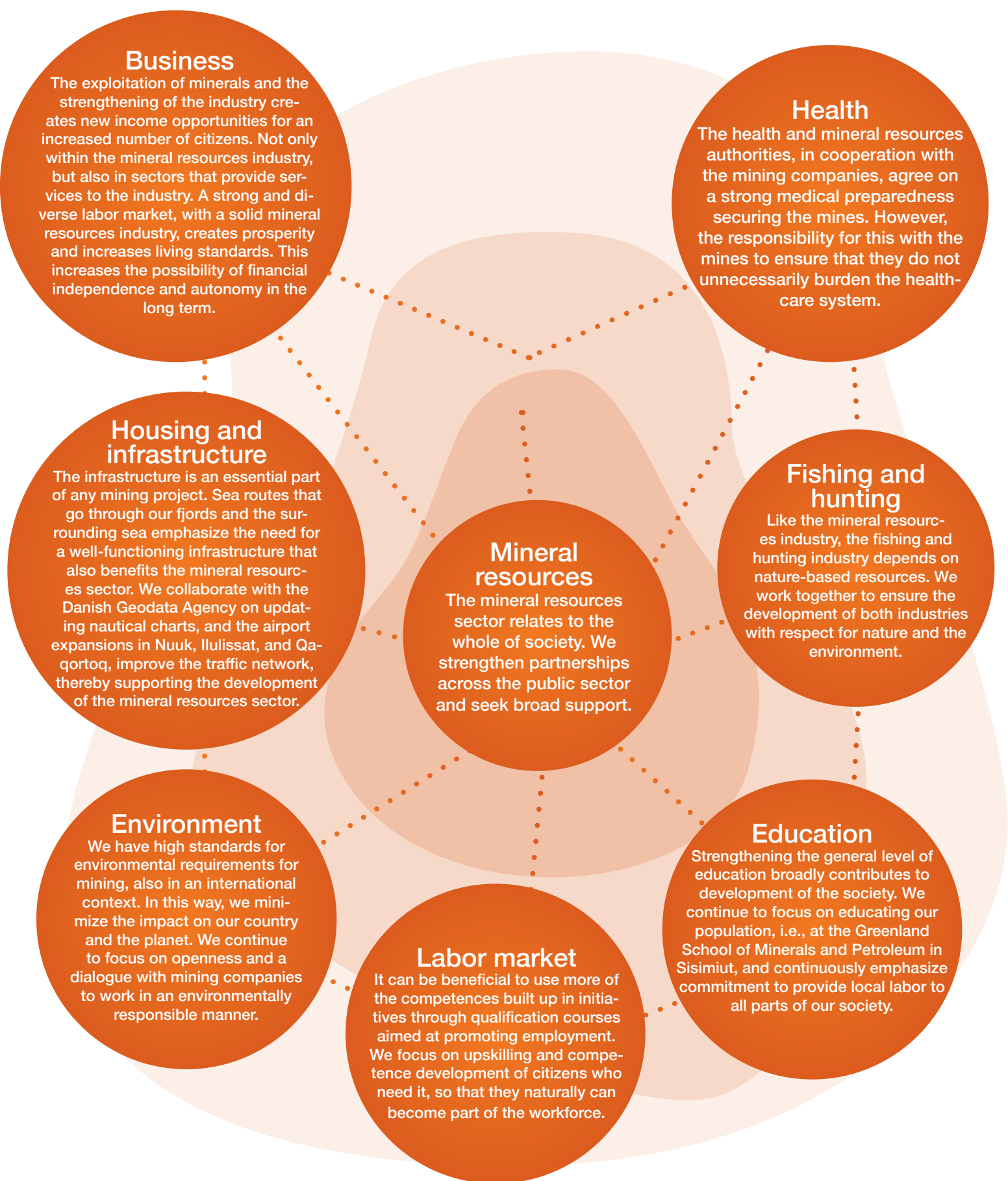


Figure 2: The cooperation interfaces between ministries within the mineral resources area.

## Focus area 1: Sustainability and society

It is crucial for the success of the strategy that there is continuous support for the mineral resources industry. This does not happen by itself but requires communication and information. Therefore, an important focus area of the strategy is to continuously inform and consult citizens about ongoing initiatives and activities. This also includes underlining the creation of value by the mineral resources industry for the society as a whole.

The mineral resources industry continues to work with consideration for fishermen, hunters, sheep farmers, tourism operators and other professions - likewise our natural and cultural values are taken into consideration. In addition, the Government of Greenland focuses on showing how values created by the mineral resources industry are passed on to society.

**Goal: Ensure a sustainable societal development of the mineral resources industry.**

### Societal benefits

The Government of Greenland has prepared an analysis of the societal benefits in relation to the mineral resources sector. The statement deals with the value of the production that is created in the mineral resources industry, and in other industries where the mineral resources industry engages subcontractors. It also describes the derived benefits in the form of added value in the rest of society, created by the added value in the mineral resources industry, and with subcontractors in other industries.

The analysis shows that even though we have large mineral deposits, the mineral resources industry, with a production of DKK 316 million in 2021, only accounts for just under 1% of the economy. The value of the mineral resources industry calculated as the value of production in the mineral resources industry itself and with subcontractors etc. in other industries, is estimated at DKK 445 million. This is referring to the accumulated value of production and services provided by companies in Greenland.

There are approximately 100 full-time employees in the industry's almost 30 companies. This corresponds to approximately 0.4% of total employment. This low proportion should be seen in light of the fact that the industry employs a relatively large proportion of foreign labor. The analysis also estimates that for every 10 people employed in the mineral resources industry, 1 person is employed in other industries that perform tasks for the mineral resources industry.

The mineral-demanding green energy transition is driving a significant demand for minerals, which Greenland with its geology has the potential to contribute to. The mineral resources industry has the potential to grow and contribute to a more diversified economy, that is currently dominated by fishing, tourism, and construction.

Although mining is currently limited, the exploration and construction activities of the mineral resources industry generate a significant amount of activity. Setting up, operating and dismantling an exploration camp, which is isolated from the local community's infrastructure with electricity supply,

---

<sup>1</sup> Deloitte, 2024: Makroøkonomisk analyse af den grønlandske råstofbranches samfundsmæssige betydning (Link: <https://govmin.gl/ka/publications/makroekonomisk-analyse-af-den-groenlandske-raastofbranches-samfundsmaessige-betydning-deloitte-november-2024/>).

<sup>2</sup> The output of the mineral resources industry is the gross value of all goods and services produced. In a national economic context, the gross domestic product, GDP, is also used, which is calculated as the gross value of production plus product taxes (net) minus consumption in production. The GDP is not calculated at industry level, which is why production is used as an indicator of the value of economic activity. The source is Statistics Greenland's StatBank.



shopping facilities, etc. employs an average of around 60 people. They are employed in transportation, catering, logistics, plumbing, carpentry, welding, drilling, blasting, rental and repair of machinery and equipment, waste management, security, and analysis and consultancy work within geology, geophysics and environment.

In addition to the mineral resources industry and its subcontractors, mineral resources activities create spin-off effects in industries not directly related to the mineral resources industry. The effects derived in the form of increased consumption and investments are based on the value creation in the mining industry and its subcontractors.

For the public treasury, the mineral resources industry means economic activity in the form of income from personal taxes, corporate and dividend taxes and royalties. There is no basis of data to calculate public revenue from the mineral resources industry in the form of corporate and personal taxes and royalties, but a partial calculation shows a revenue of DKK 20 million in 2022.

### **Value creation in all parts of the lifecycle of a mine**

The Government of Greenland provides the public with insight into the many stages of a mining project's lifecycle and continues to see this as an important communication task. The value creation changes from initial feasibility studies to the producing mine, and different professions are involved at different points in the process. Local subcontractors already contribute to the mining industry during the long exploration phase with e.g. logistics, service functions in exploration camps, and legal and financial advice. The Government of Greenland wants to make these subcontractor tasks, employment, skills development and tax revenues visible for society. We also want to communicate more clearly the social initiatives that the industry invests for the benefit of society.

The life of a mine does not stop when a mine closes. People need to be informed about the processes after closure. The different steps in the decommissioning of an active mining area include restoring natural areas, developing the area for recreational purposes or using and developing the mine infrastructure for other activities. We involve the population in the vision for life after the mine closure and increase transparency about processes and results.

The Government of Greenland wants to focus on better and more communication to citizens about the mineral resources industry. We need to create a greater understanding of how minerals are used in the products we surround ourselves with in everyday life. Especially those that are found in the green transition and technology. We also have a continued focus on engaging school children in the field between geology and technology.

The Ujarassiorit mineral hunt is an example of a long-term educational project that engages the population. People voluntarily collect and submit rock samples to be evaluated by geologists.

Ujarassiorit has existed for 25 years, and over the years hundreds of citizens from all over the country have submitted rock samples for assessment. In the coming strategy period, there is a special focus on reaching out to the young generation. Communication is aimed at primary and secondary school classes, which are engaged for example, through competitions in communicating the use of minerals in students' everyday lives.



*Figure 3:  
Photo of winning students from the Ujarassiorit school competition 2024, class 2.A, from the school Atuarfik Hans Lyngé. (Photo: AHL).*

### Concrete initiatives

- 11.1. Conduct at least two population surveys on attitudes towards the mineral resources industry.
- 11.2. Focus on communicating the mineral resources sector, including education and job opportunities, and an increased dialog with the population about the mineral resources sector, and the added value of mineral resources to society.
- 11.3. Clarify the contribution of the mineral resources industry to the green transition through an information campaign.

### Climate and environment

When we talk about climate and the environment, mineral resources inevitably come up. Mining activities are thus assessed based on the overall positive or negative impact on society and the environment. The Paris Agreement requires a global need for minerals for the green transition. For example, the batteries in the globally increasing electric car production and the magnets in wind turbines are dependent on mineral resources found in the Greenlandic mountains, but it is important that minerals are extracted sustainably, because without access to hydropower or other green forms of energy, establishment of more mines contributes significantly to Greenland's CO<sub>2</sub> emissions. The remote location of mines often makes it impossible to connect them to existing public hydropower plants, and it can be expensive to establish solutions for individual mines. The Government of Greenland will therefore, in collaboration with the industry, work for initiatives that make it attractive and possible to implement diverse, green solutions within energy-efficient infrastructure, such as hydro and wind power.

The Environment Agency for Mineral Resources Activities is the authority that regulates environmental, nature and climate conditions in connection with activities in the mineral resources industry. This agency is placed under the Ministry of Agriculture, Self-Sufficiency, Energy and Environment to ensure an arm's length principle between business interests and nature and environmental interests. The Mineral Resources Authority (Ministry of Business, Trade, Mineral Resources, Justice and Gender Equality and the Mineral License and Safety Authority) works closely with the Environment Agency for Mineral Resources Activities to meet the environmental standards of the industry.

We need to motivate the mineral resources industry to act sustainably. Like other industries, the mineral resources industry focuses on environmental, social and governance factors (ESG - Environmental, Social and Governance). Companies see the benefit of this as it becomes more of a competitive parameter and at the same time shows the way to sustainable economic growth. Especially with value creation in mind, and in close dialogue with many parts of Greenlandic society - individuals, organizations, companies and other stakeholders. Through close dialogue with the mineral resources industry, the Government of Greenland will create increased focus on the ESG area.

### Concrete initiatives

- 11.4. Dialogue with the mineral resources industry in relation to environmental and social factors and corporate behavior (ESG-area).
- 11.5. Develop and implement initiatives that create better conditions for the industry by using renewable energy sources.
- 11.6. Increase cooperation with research institutions with experience in the Arctic and renewable energy, such as hydropower and solar energy.



## The interaction between the environmental focus areas and the life cycle of projects related to mineral resources.



Figure 4: The focus areas of the Mineral Resources Strategy and the life cycle of projects related to mineral resources.

## Education and workforce

There is a need for us to continue to be able to supply labor to the exploration and mining industry, e.g. through the Greenland School of Minerals and Petroleum (KTI) in Sisimiut. The Government of Greenland continues the good cooperation with KTI, and the dialog with the mineral resources industry about relevant educational needs. Through generations, we have built up in-depth knowledge and understanding of our natural world, teaching us to sustain life through the sustainable use of living resources. With occupational migration from hunting and fishing, this traditional knowledge and skills are at risk of being lost. Our culture is built on adapting and learning. The Government of Greenland considers education and building new knowledge as a natural progression of our basic skills. That is why the Government of Greenland is working on increasing the interest in education in the mineral resources industry. Here, it can be advantageous to use more of the skills that have been built up in initiatives through upskilling courses aimed at promoting employment.

The industry needs a good image to attract a suitable and gender-diverse workforce. This helps to strengthen anchoring in society, and gender diversity has a generally stabilizing effect in many professions.

### Concrete initiatives

- 11.7. Launch a campaign on education and job opportunities in the mineral resources industry targeting young people.

## The gender diversified industry

Gender equality in the mineral resources industry is an area that hasn't received much attention in the past, but it can have a positive impact on both the industry and the socio-economic conditions in society. A gender-diverse industry can promote innovation, utilization of different skills, and attract a broader talent pool. In this way, the industry contributes to creating added value for society. Equal opportunities for engagement in society regardless of gender, e.g. through equal opportunities for employment, can in turn have a positive effect on the social acceptance of mining (social license to operate). This creates a favorable relationship between the mining industry and the local community.

Improved understanding of a more diversified gender composition and gender impacts in relation to mineral resources projects can thus contribute positively to the business results and goals of the mining industry. Equal opportunities for women and men in society supports the Government of Greenland's efforts in gender mainstreaming through gender analyses, which is aimed to be developed within the strategy period.

### Concrete initiatives

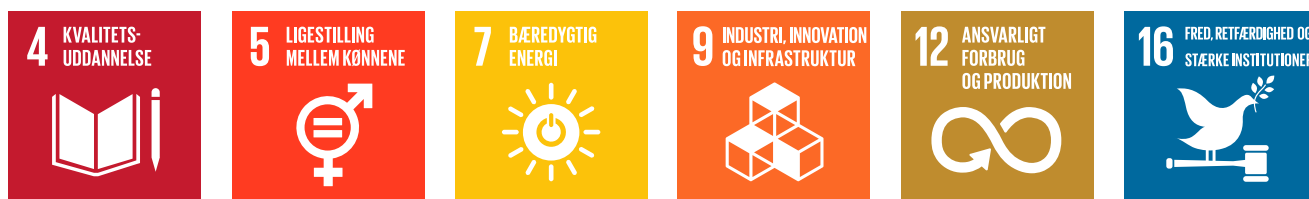
- 11.8. Conduct baseline gender analysis and gender distribution statistics in the mineral resources industry.
- 11.9. Conduct a gender equality campaign for jobs in the mineral resources industry with the aim of breaking down the gender segregated labor market.
- 11.10. Develop gender equality guidelines for the mineral resources industry that show where companies can take action to increase integration of both genders in all parts of the companies' task portfolio.

### Digital presence

We will continue to be visible on digital platforms, including social media. The Mineral Resources Administration continues to use the website domain govmin.gl for exploration and mining-related information for the industry. In the future, govmin.gl is also expected to be used for more knowledge and information aimed at citizens, as is already happening in connection with the landslide surveillance. Social media is used to share the good stories of fieldwork and progress in general, and other significant events in the interface between geology and society.

### Concrete initiatives

- 11.11. Develop and implement a new information and marketing strategy for mineral resources.







*Figure 5:  
On inspection of the Nalunaq gold mine in South Greenland, 2024 (Photo: MLSA).*

## Focus area 2: Attractive investment frameworks

The mineral resources industry must be further developed and contribute more to the national economy. The Mineral Resources Administration is in constant dialogue with the mineral resources industry about challenges and opportunities. 15 years after the repatriation of the mineral resources area, it is time to evaluate the initiatives that have been implemented. It is important to look at which political initiatives have succeeded, and which new ones are needed to create an attractive framework for the industry. Greenland's one-door principle and the availability of geo-scientific data are examples of successful initiatives that contribute positively to the industry's own activities. In previous strategy periods, there has been a focus on streamlining case processing and administration, for example, an online application portal has been implemented to facilitate the application process, and various standards and procedures have been developed to create transparency. The Government of Greenland has promoted Greenland's mineral resource potential at various international conferences, and meetings have been held with mineral resource companies and potential investors. However, it is clear that the mineral industry still faces major challenges in attracting investors to their projects. This is not a specific problem for Greenlandic projects, but a global challenge. During the strategy period, the Government of Greenland will continue the initiatives that work and implement new initiatives in collaboration with the mineral resources industry and our partners. For example, through facilitation of meetings with investment funds, direct marketing, and a reassessment of the IBA agreements. Here, it is looked at exploration and exploitation initiatives as well as local mineral activities. The new legislation regarding local mineral activities is expected to strengthen the small-scale sector, and during the strategy period, the expected effect will be closely monitored.

**Goal: We promote sustainable economic growth.**

### Investments

Greenland has great mineral potential and therefore a need to promote investment opportunities, as there are high costs associated with establishing a mine. In this strategy period, initiatives will be launched to attract investment and promote project financing, e.g. by facilitating meetings between the raw materials industry and investment funds with the involvement of our international partners.

Mining is capital intensive and is a very long-term investment. It takes an average of 16 years to establish a mine, from the initial exploration phase to mine opening. During that time, there is no revenue and only costs for everything from analysis, fieldwork, surveys and construction of buildings and infrastructure, often with high technical requirements, etc. Currently, project owners bear the majority of the financial risk and the lack of investors is hampering development globally. This means that some projects do not develop despite good geology and potential.

It's not just a lack of venture capitalists that's a problem. Protectionism also plays a role. Policies in other countries in the form of government subsidies or market dominance affect global pricing and thus the competitiveness of Greenlandic projects.

The challenges of obtaining financing for Greenlandic projects are therefore high on the agenda in the coming strategy period.

The Government of Greenland will continue to try to attract new companies, e.g. through direct marketing and participation in international trade fairs. In the future, we will emphasize participation at the Canadian PDAC fair and continue the direct marketing towards, among others, large capital-intensive mining companies, which was initiated in 2023.

In addition, the Government of Greenland will continue to raise the issue of financing sources with mineral importing countries. Possible instruments that can be used on their side could be to open access to loans from their import/export banks, provide loan guarantees, provide direct support to the projects, or contribute with technical advice or facilitate B2B meetings between the mineral companies and potential customers (off-takers).

In the small-scale sector, a certification system will be added. The system is expected to create added value for small-scale licensees who resell minerals. The certification system is sought to be introduced within several Greenlandic products across different sectors. In the small-scale sector, certification is expected to follow the individual mineral or gemstone, with clear information such as finding location and mineral description. The certification also includes a photo of the individual finding.

### **Concrete initiatives**

- 12.1.** Continued marketing at the Prospectors & Developers Association of Canada Convention (PDAC) mineral show and direct marketing to specific companies.
- 12.2.** Continue bi- and multilateral cooperation to support the projects' financing opportunities through e.g. export-import banks.
- 12.3.** Ongoing assessments of Greenland's tax and royalty model including benchmark analyses.
- 12.4.** Increase communication with licensees on laws and investment conditions.
- 12.5.** Ongoing facilitation of meetings between investment funds and the mineral resources industry.
- 12.6.** Development of a certification system for small-scale licensees in order to increase the value of the individual found mineral.





*Figure 6: From the Nalunaq gold mine in South Greenland, 2024 (Photo: Amaroq Minerals).*



## Permits and requirements

Continued activity in the country is ensured by obliging exploration companies to explore within their license area. The Government of Greenland will work to attract companies to new geographical areas, and we focus on the progress of the projects.

The sustainable and efficient management of natural resources is ensured by better connection between Ministries. Stable and transparent legislation and licensing conditions form the foundation for a healthy industry. We need to continuously look at countries we compare ourselves to and assess our competitiveness, regulatory framework and administrative procedures.

### Konkrete initiativer

- 12.2.7. Work for targeted tax agreements when there is a concrete need and such an agreement that can support the mineral resources industry.
- 12.7. Increase ad-hoc cooperation between public authorities to support synergies between industries and, among other things, strengthen the infrastructure within transportation and internet communication.
- 12.8. Update of the anti-corruption policy of the Ministry.

## Administration and case management

The permitting procedures need to be improved. The goal is to increase the agility of the application process and the subsequent case handling. We work towards simple, clear and faster processes, e.g. through increased digitalization. The Government of Greenland continues to work on improving guidelines for the industry and defining standards for e.g. Social Impact Assessment (SIA) and data for reporting.

The Government of Greenland is investigating whether a physical presence outside of Nuuk during the field season could streamline regulatory processing and improve our service to small-scale licensees in particular. A pilot project with a physical presence will be established in South Greenland, where there are many activities related to mineral resources.

### Konkrete initiativer

- 12.9. Increased digitalization of administrative processes, including application processes.
- 12.10. Updating of license procedures, standard terms and conditions, etc. in order to increase the flexibility of case processing, including increased communication with the industry about these.
- 12.11. Implementation of a pilot project with the MLSA's physical presence in South Greenland during the field season.



## Organizational structure

The current organizational structure must be continuously assessed and optimized in relation to supporting the tasks of the Mineral Resources Authority. The Ministry of Business, Trade, Mineral Resources, Justice and Gender Equality has units that handle departmental administrative tasks. However, the Ministry also conducts marketing and research, and serves as a geoscience data center. The Mineral License and Safety Authority under the Ministry administers permits and approvals and carries out inspections in accordance with the Mineral Resources Act.

The current organization supports to some extent the political objectives of maintaining an arm's length principle in relation to keeping decisions on environmental issues separate from approvals of permits and marketing activities. Likewise, the legislation provides for a more extensive possibility of being able to appeal against decisions made by the Authorities for which there is a recourse to the Government/Ministry. These conditions need to be assessed for other solutions, considering the organization's robustness and synergies in terms of personnel, finances and work tasks.

The Geology Department within the Ministry conducts geological advice and research in connection with the implementation of geological projects, e.g. mineral mapping, CCS and potential landslide zones, but does not have optimal physical facilities available. It is a department in development, and the department's tasks are similar to tasks typically solved by geoscience research institutions.

By physically and organizationally placing the Department as a separate research unit, the Government of Greenland expects that in the future the Department of Geology has a greater opportunity to solve project and research-related tasks for the benefit of the mineral resources industry. This will provide a higher degree of development potential in relation to servicing the industry, e.g. in connection with the development of a geoscientific data center and the establishment of a new drill core storage facility. Furthermore, it is expected to be easier to attract research funding if the department is given the status of a proper research unit.

### Konkrete initiativer

- 12.12. Conducting an analysis of the organizational structure of the Mineral Resources Administration (Department and Board) and possible implementation of a new organizational structure.

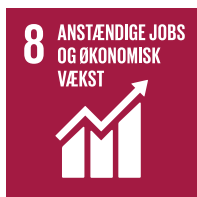
## Local anchoring

When a mine is established, cooperation agreements, the so-called IBA (Impact Benefit Agreement), are already established between the mining company, the municipality, and the Government of Greenland with the aim of strengthening positive development in the local community. However, the process does not work optimally and is administratively heavy as of today. The agreements contain terms that cannot be qualified, which makes it difficult for the company and citizens to see which specific activities are to be initiated. It is also difficult for subcontractors to expand their product catalogue in terms of time and finances without prior declarations of intent from the companies regarding contracts.

During the strategy period, the Government of Greenland examines the challenges of the IBA agreements in more detail, and together with the municipalities and the mineral resources industry, reassesses the concept behind it. Our goal is to establish simple and transparent IBA agreements, where all terms are qualified and at the same time align with the Assessment of Societal Sustainability (SIA). The areas of the country are often attractive to several industries, and this can create an overlap between interests. The Government of Greenland works for a closer cooperation between ministries, including mapping of land use. For example, work is being done to create a common platform where all permits across departments are listed. Possible synergies between industries are examined in more detail.

### Konkrete initiativer

- 12.14. Strengthening societal sustainability by reassessing the IBA agreements with the aim of establishing simple and transparent IBA agreements where all terms can be qualified and at the same time are aligned with the SIA.
- 12.15. Ongoing facilitation of meetings between the public sector, the mineral resources industry, subcontractors and/or the public.
- 12.16. Facilitation of an annual investment conference for global investors with the aim of creating insight into opportunities in Greenland



## Focus area 3: Critical Minerals

The Government of Greenland has a responsibility to contribute as much as possible to the realization of the global climate goals. Publicly funded basic research is therefore increasingly aimed at areas with potential for critical minerals or research that otherwise complements the green transition. This paradigm shift was already made in the previous strategy period, for example through the Government of Greenland's collaboration with the Nordic countries on mapping the potential for critical minerals in the Nordic region, the collaboration with the US on projects related to critical minerals in Greenland, and the collaboration with the EU on sustainable value chains and Carbon Capture and Storage.

**Goal: We have strong partnerships for action and sustainable development.**

### Critical Minerals

The market for minerals has received an increasing international political focus. Several industrialized countries are concerned about control of the value chains for minerals – and, thus, the production and supply of semi-finished products, including end products. The supply of minerals, semi-finished products and end products is important for the economy, technological development, and strategic goals of the country, such as achieving the green transition.

The production of technologies for the green transition requires more and different minerals than the hydrocarbon-based technologies they replace, e.g. copper, cobalt, and rare earth metals. Critical minerals are also important for the expansion of the renewable energy in the EU, which will reduce the EU's import dependence on hydrocarbons from outside the EU and contribute to the European goal of achieving climate neutrality by 2050.

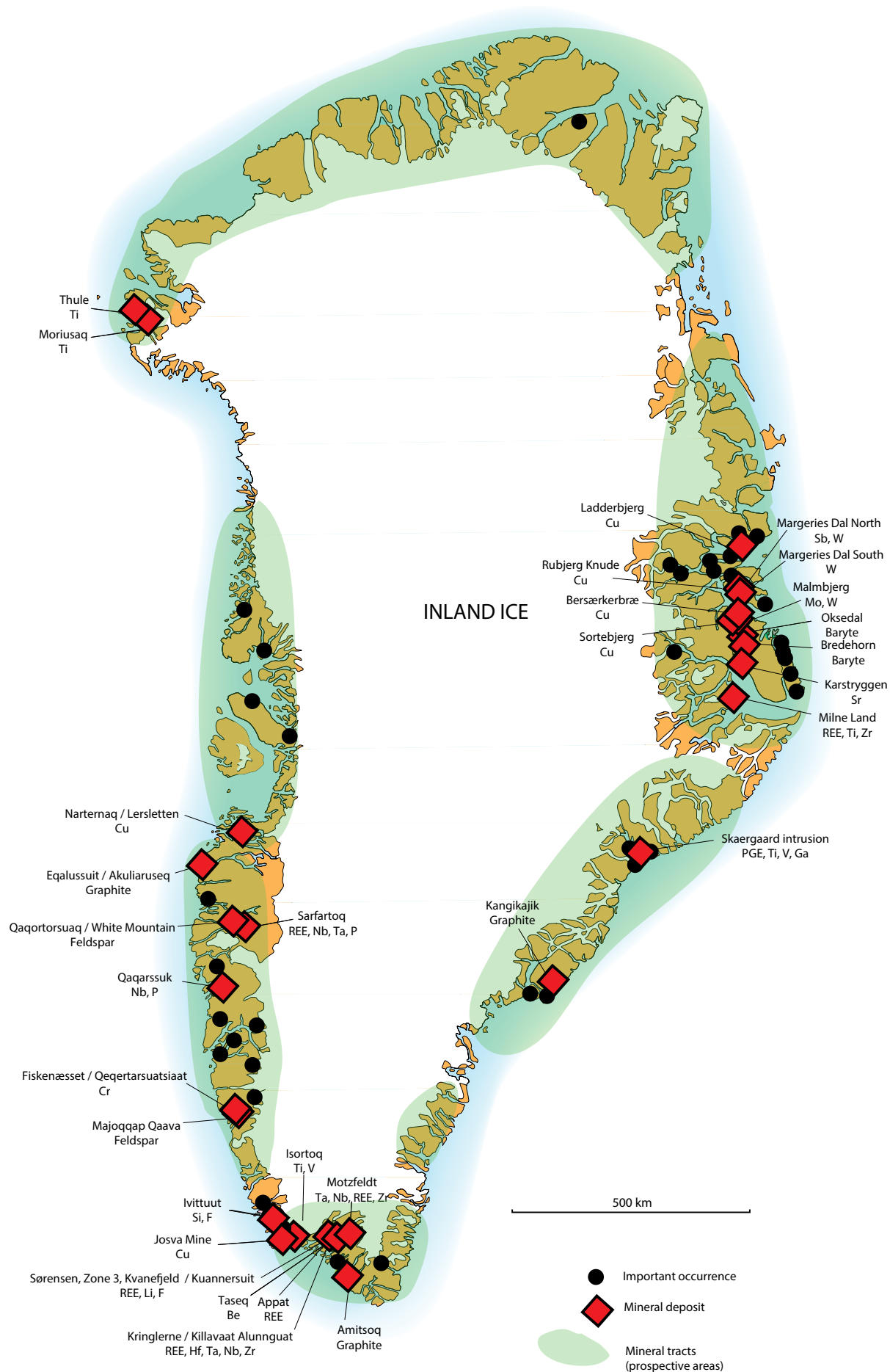
The increasing, international focus on critical minerals forms the basis for the Government of Greenland's international cooperation in the field of mineral resources. Greenland has several deposits that contain critical minerals that are of particular interest to investors.

In 2019, the Government of Greenland entered a memorandum of understanding with the United States and has collaborated with the United States for several years to develop the mineral resources area. The collaboration includes projects focusing on geological data, marketing and setting framework conditions.

In 2023, the Government of Greenland entered a strategic partnership with the EU to develop sustainable value chains for mineral resources. The Government of Greenland and the EU have *Mineralkrævende teknologier og global rivalisering betyder, at internationalt samarbejde om kritiske mineraler forventes at få mere tyngde i indeværende strategiperiode. Naalakkersuisut vil have øget fokus på teknologisk udvikling og innovation indenfor kritiske mineraler, og det globale partnerskab for bæredygtig udvikling skal styrkes.*

---

<sup>3</sup> REPowerEU: A plan to rapidly reduce dependence on Russian fossil fuels and fast forward the green transition, 18. Maj 2022, [https://ec.europa.eu/commission/presscorner/detail/en/IP\\_22\\_3131](https://ec.europa.eu/commission/presscorner/detail/en/IP_22_3131)



Figur 7: Oversigt over kritiske mineraler fra MiMa rapport 23/1.

subsequently initiated a plan with a number of projects. The projects will, among other things, support investments from the EU by bringing actors together and providing information about Greenland's critical mineral resources and focus on sustainability.

In 2024, Greenland became a member of the Mineral Security Partnership (MSP) Forum, which is a multilateral collaboration between mineral exporting and importing countries. Among other things, the Government of Greenland will use the collaboration to promote mining projects in the MSP Forum, which can help companies apply for financing.

Mineral-intensive technologies and global rivalry mean that international cooperation on critical minerals is expected to gain weight in the current strategy period. We will have an increased focus on the technological development and innovation in critical minerals, and the global partnership for sustainable development must be strengthened.

In mapping the country's geology, including critical minerals, we are working closely with the Geological Survey of Denmark and Greenland (GEUS), and there will be further focus on, among other things, potential mapping during the strategy period.

### Konkrete initiativer

- 13.1. Implementation of the strategic cooperation with the EU on sustainable value chains, which will secure the buyer market for Greenland's mineral resources.
- 13.2. Working for the renewal of the 2019 agreement between Greenland and the US.
- 13.3. Strengthening international relations to develop projects with critical minerals, of which price and supply may be subject to political conditions.
- 13.4. Provide information about Greenland and support funding opportunities through the Minerals Security Partnership (MSP) Forum.







*Figur 8:  
Eudialyte from South Greenland (Photo: Ministry of Business, Trade, Mineral Resources,  
Justice and Gender Equality)*



## Target area 4: Geological mapping and geodata

The exploration companies' investment risk is minimized through making exploration-relevant data available free of charge by the Government of Greenland. We assure the quality of existing data and make it available in new ways, and we collect new data through publicly funded research projects. This is an ongoing process that has taken place over several strategy periods and is still necessary for Greenland to be attractive as an investment destination for the industry. The projects not only generate knowledge for the mineral resources industry, but also serve the many researchers who work with Greenland.

Geodata has many interfaces within geosciences, e.g. geophysics, geochemistry, mineralogy, sedimentology and remote sensing. New methods are continuously being developed worldwide to the benefit of mineral resources industry. In this regard it is important to maintain the good research collaborations that we have both nationally and internationally.

### Goal

- Improve the basis of data that helps to make research and investment attractive.
- Strengthen the prevention of natural disasters, specifically in the landslide area.



Figur 9:

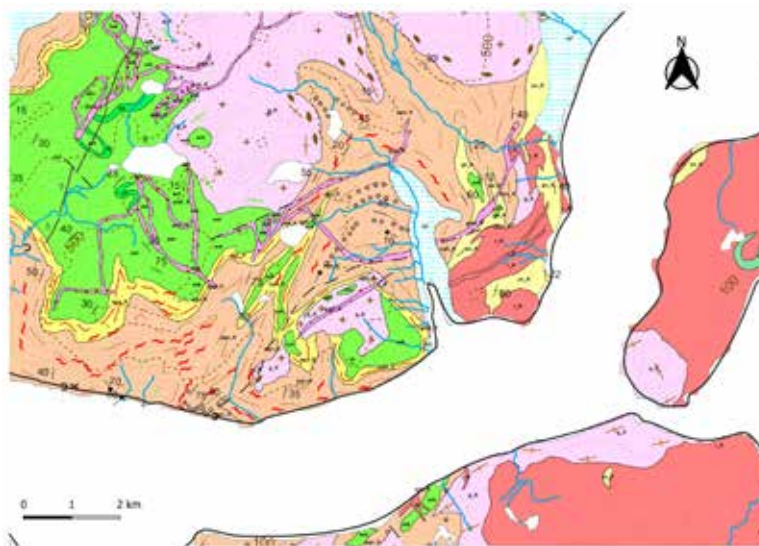
Eudialyte from South Greenland (Photo: Ministry of Business, Trade, Mineral Resources, Justice and Gender Equality)

## Mapping

Greenland's land mass is far from mapped. This mapping is the basis for all mineral exploration, and benefits both exploration companies and small-scale rights holders. At the same time, the mapping provides a better understanding of potential landslide areas. The mapping provides insight into how our country was formed and what rocks and minerals are found. Different types of mapping projects are carried out, e.g. mapping of an area's mineral potential, or generation of geological maps. The mineral potential reports are important elements in the marketing of mineral resources and stand as a good example of scientific projects that complement the mineral resources industry. Mapping can also include industrial minerals, sand extraction and glacial rock flour. Glacier rock flour can potentially be exported as a sustainable resource to developing countries, and this new product is still under development.

The Government of Greenland continues to prioritize the implementation of scientific projects related to the mineral sector, including geological mapping on a scale of 1:100,000 - with a special focus on areas of commercial interest. Almost half of Greenland's ice-free land area have been mapped in 1:100,000. The cost is estimated to be approx. DKK 600 million, and it will take about 50 years to map the rest of Greenland. During the strategy period, mapping of areas near existing infrastructure, or areas assessed with a very large mineral potential, are prioritized: The mapping of Northeast Greenland continues, here the geological environments are favorable for the discovery of critical minerals. Furthermore, an update of map sheets of South Greenland is planned, here lies the greatest potential for rare earth metals.

Preparing a geological map is a lot of work: First, a desktop study is carried out, where existing data is collected, such as exploration data and topographic maps. Then, the field expedition is planned, where researchers participate within their own field of expertise. In the field, different types of data are collected, such as physical samples, high-resolution aerial photographs and rock type descriptions. The major work takes place after the fieldwork, where samples and data have to be analyzed, interpreted and described. This creates a further understanding about the geology of the area, the map can be drawn, digitized and quality assured before printing.



### Konkrete initiativer

- 14.1. Continued geological mapping on a scale of 1:100,000, prioritizing areas with a commercial interest.
- 14.2. Continued implementation of scientific projects that generate new knowledge for the mineral resource industry to minimize companies' investment risk.

## Geophysics and Remote Sensing

Often requested types of data by the mineral resource industry are geophysical and Remote Sensing data. Measurements made from aircraft or satellite (Remote Sensing) are valuable to the exploration companies, but only a few areas in Greenland are covered. The geophysical data density is also low compared to other countries. Especially for North-, Northeast- and East Greenland there is very little geophysical data available.

It is estimated to take a minimum of 10 years and it will cost around DKK 500 million to carry out a regional geophysical mapping of the whole area of Greenland. The Government of Greenland has received funding from the EU for a feasibility study for mapping, with the aim of identifying how and what data is to be collected, as well as prioritizing the order of areas to be mapped. The prioritization is based on areas with large mineral resource potentials, limited logistical challenges, and where the geophysical data are expected to improve the knowledge base for the area significantly. At the same time, the Government of Greenland is investigating the possibilities of applying for funding or entering into partnerships to initiate new, regional geophysical surveys, and purchase additional satellite data.

### Konkrete initiativer

- 14.3. Conduct a feasibility study to identify the geophysical data types to be collected and a prioritization of the order of mapping.
- 14.4. Identification of funding opportunities for regional geophysical surveys and satellite data.





*Figure 10:  
Eudialyte from South Greenland (Photo: Ministry of Business, Trade, Mineral Resources,  
Justice and Gender Equality)*



## Landslides and surveillance

In recent years, natural disasters are experienced with greater frequency in Greenland. These are most often events such as landslides and subsequent tsunamis. The Government of Greenland continues its efforts against potential natural disasters of this kind. We can do this by reducing vulnerability and exposure to potential disasters, and integrating continuous monitoring of landslides with subsequent assessment of the probability and extent of a possible landslide event.

During the strategy period, monitoring efforts continues for areas at risk of landslides. Any new landslide areas are also mapped. It is important to continue to carry out preliminary studies and monitor unstable mountain sections because they may pose a risk to the population. There is a natural attention to landslides and natural disasters in general. Therefore, it is still important to have ongoing information about the status of the landslide areas.

### Grønlands Beredskabskommission

Grønlands Beredskabskommission er nedsat med det formål at rådgive Naalakkersuisut om spørgsmål om beredskabet i Grønland samt i krisesituationer at tilvejebringe et fyldestgørende informationsgrundlag og samordne de involverede myndigheders aktiviteter på det strategiske niveau. Grønlands Beredskabskommission består af 7 faste medlemmer og 3 tilfornordnede, der repræsenterer grønlandske og danske myndigheder.

The Mineral Resources Authority assesses the risk of landslides on the basis of research. These are based, among other things, on the geoscientific data derived from measurements from the landslide areas. This also forms basis for the emergency response assessments that the Emergency Response Commission makes in relation to natural disasters, risk management, safety warnings, and possible evacuation.

Greenland and Switzerland have common challenges with unstable mountain zones, which in certain areas can be a danger to the population. Global warming in particular poses challenges when permafrost begins to thaw and destabilize the mountains. In 2022, the Mineral Resources Administration therefore initiated a collaboration with Swiss mountain slide experts. The focus was on the prevention of extreme incidents in the event of new landslides.

Since 2017, the administration has collaborated with American experts on modelling tsunami formation patterns. The experts map the heights of which the wave hits the inhabited areas in the event of new landslides. This research collaboration is further strengthened through joint workshops, visits and capacity building, and will continue during the strategy period.

### Konkrete initiativer

- 14.5. Continued collaboration with research institutions, e.g. on geological mapping and landslides, and entering new agreements for the continued strengthening of geoscientific competences.
- 14.6. Continued monitoring of unstable landslide areas.
- 14.7. Implementation of a mapping program for landslides.
- 14.8. Continued expansion of citizen information in the area of natural disasters, including the establishment of an interactive map with risk assessments and implementation of an information campaign on natural disasters.
- 14.9. Develop a strategy for geoscientific assessment of the risk of landslides.

## Data generation and sharing

Mapping is heavy on data. Therefore, work is being done towards a more stable option for storing the large data packets. The data packages must be accessible by local and international stakeholders and actors. The Government of Greenland continues its efforts to increase the availability of geoscientific data. During the strategy period, work is being done to ensure the quality and publish a larger amount of historical and geological data.

For example, a prospecting guide is being prepared about gemstones aimed at small-scale licensees and other stakeholders. The first part of the prospecting guide is about North Greenland. Prospecting guides are planned to be published continuously as the work is completed. At the same time, the gemstone database is expanded and there is a continued focus on generating and publishing new gemstone data.

[www.greenmin.gl](http://www.greenmin.gl) er hjemsted for den omfattende mineraldatabase, som drives i et samarbejde mellem GEUS og Grønlands Selvstyre.

At the same time, new and research-relevant data is still being generated. This data must be easily accessible and digitized. During the strategy period, the Greenland Portal Greenmin.gl will therefore continue to be expanded and improved in collaboration with GEUS.

### Konkrete initiativer

- 14.10. Increased availability of geoscientific data via the homepage and the Greenland portal.
- 14.11. Preparation and publication of a gemstone prospecting guide for North Greenland.

## Carbon Capture and Storage (CCS)

The CCS technology for capturing and storing CO<sub>2</sub> in the subsurface is a technology that will contribute to reducing the CO<sub>2</sub> content in the atmosphere. In 2023, the Government of Greenland approved Greenland's strategy for CO<sub>2</sub> capture and storage, and the implementation of this will continue during the strategy period.

### Konkrete initiativer

- 14.12. Continue work on the Carbon Capture and Storage (CCS) strategy published in 2023.





*Figure 11:  
Mapping in the Maniitsoq area (Photo: VHDesign/Ministry of Business, Trade,  
Mineral Resources, Justice and Gender Equality)*



## Drill core storage

Greenland has a unique collection of drill cores from previously investigated deposits and includes more than 150,000 meters of drill cores. The drill cores represent great value for companies when they want to explore an area, as drilling is very expensive to carry out. It is estimated that the total value of the existing drill cores in the drill core storage is more than DKK 225 million. The current drill core storage facility is full, and not user-friendly. For example, it is not possible to access the current storage facilities all year round. There is an urgent need for a new storage facility that integrates the users' future needs. The Government of Greenland has obtained external funding for a new drill core storage facility which will be established during the strategy period.

The existing drill core database cannot integrate geological data such as drill core logs and descriptions. There is a need for a new data system for the drill cores that can handle both inventory management and geological data. All drill cores must be registered in the system, and there is work to be done to type in and to assure the quality of the drill core data that are not yet registered yet. The new drill core data system will help improve public accessibility, making it easier for the mineral resource industry and other stakeholders to access drill core data in the future.

### Konkrete initiativer

- 14.13. Establishment of a new drill core data system.
- 14.14. Establishment of a new drill core storage facility.
- 14.15. Initiate registration of drill cores that are not yet registered in the system.



## Concluding remarks

The mineral resource strategy comes with concrete initiatives that strengthen development opportunities for the mineral resource industry.

Mining is a true opportunity for the development of our country as a whole, and for the population in particular – from education to an active and rewarding working life. Our country is big, which is both a strength and a challenge. A strength because the area with geological potentials is large and still relatively under-explored. A challenge because it comes with infrastructural challenges.

With this mineral resource strategy, the Government of Greenland communicates the needs and requirements that must be met in order to establish a well-functioning and sustainable industry. We strive for continued dialogue with the population about achieving the goals for the development of the mineral resources area, with increased opportunities and sustainable outcome for the benefit of the entire country.



## Appendix 1: The Mineral Resources Strategy and the UN's Sustainable

### Development Goals

In the following, the four main themes of the Mineral Resources Strategy are presented in brief form together with the specific UN Sustainable Development Goals that the Mineral Resources Strategy relate to. At the same time, the indicators and concrete initiatives are formulated that are being worked on to achieve during the strategy period. The alignment with the UN's Sustainable Development Goals clarifies how the Mineral Resources Strategy specifically takes responsibility within the framework of the objectives – for the benefit of Greenland and the global community.

#### Focus area 1: Sustainability and society

##### UN Sustainable Development Goal 4.4 Increase the number of people who can support themselves

By 2030, substantially increase the number of youth and adults who have relevant skills, including technical and vocational skills, for employment, decent jobs and entrepreneurship.



##### Greenlandic Indicators

**1.i.1.** By 2030, the number of young people and adults in Greenland who have relevant skills in the mineral resource industry must be increased.

##### Greenlandic Initiatives

**1.2** Focus on communicating the mineral resources sector, including education and job opportunities, and an increased dialog with the population about the mineral resources sector, and the added value of mineral resources to society.

##### UN Sustainable Development Goal 5.1 End all forms of discrimination against all women and girls everywhere

All forms of discrimination against all women and girls everywhere must be stopped.



##### Greenlandic Indicators

**1.i.2.** By 2030, a gender equality campaign will be carried out in the area of mineral resources.

##### Greenlandic Initiatives

- 1.7** Launch a campaign on education and job opportunities in the mineral resources industry targeting young people.
- 1.8** Conduct baseline gender analysis and gender distribution statistics in the mineral resources industry.
- 1.9** Conduct a gender equality campaign for jobs in the mineral resources industry with the aim of breaking down the gender segregated labor market.
- 1.10** Develop gender equality guidelines for the mineral resources industry that show where companies can take action to increase integration of both genders in all parts of the companies' task portfolio.

## UN Sustainable Development Goal 7.2 Increase the share of renewable energy globally

By 2030, increase substantially the share of renewable energy in the global energy mix



### Greenlandic Indicators

**1.i.3.** The share of renewable energy in the mineral resources industry will be increased.

### Greenlandic Initiatives

- 1.5** Develop and implement initiatives that create better conditions for the industry by using renewable energy sources.
- 1.6** Increase cooperation with research institutions with experience in the Arctic and renewable energy, such as hydropower and solar energy.

## UN Sustainable Development Goal 12.6 Motivate companies to act sustainably

We need to encourage companies to work sustainably. This is especially true for large and multinational companies. At the same time, companies should be encouraged to incorporate sustainability information in their annual reports.

### Greenlandic Indicators

**1.i.4.** Number of mining companies that publish their sustainability reports.

### Greenlandic Initiatives

- 1.4** Dialogue with the mineral resources industry in relation to environmental and social factors and corporate behavior (ESG-area).



## UN Sustainable Development Goal 13.3 Build knowledge and capacity to meet climate change

Increase general knowledge of and awareness of the possibilities for both slowing down global warming and adapting to climate change. This must be done at both, individual and institutional level. At the same time, increase our capacity to be able to predict and limit the damage at an early stage.



### Greenlandic Indicators

**1.i.5** Information campaign about the mineral resources industry's contribution to the green transition.

### Greenlandic Initiatives

- 1.3** Clarify the contribution of the mineral resources industry to the green transition through an information campaign.

## UN Sustainable Development Goal 16.6 Develop effective, accountable and transparent institutions

Develop effective, accountable and transparent institutions at all levels.



### Greenlandic Indicators

- 1.i.6.** There is a high degree of trust in the Mineral Resources Authority among the adult part of the population.

### Greenlandic Initiatives

- 1.1.** Conduct at least two population surveys on attitudes towards the mineral resources industry.  
**1.11.** Develop and implement a new information and marketing strategy for the mineral resources sector.

## Focus area 2: Attractive investment frameworks

## UN Sustainable Development Goal 8. Create sustainable economic growth

We must maintain economic growth in accordance with national circumstances, and in particular ensure an annual economic growth of at least seven percent in the least developed countries.



### Greenlandic Indicators

- 2.i.1.** Growth in share of exploration expenditure.

### Greenlandic Initiatives

- 2.1.** Continued marketing at the Prospectors & Developers Association of Canada Convention (PDAC) mineral show and direct marketing to specific companies.  
**2.2.** Continue bi- and multilateral cooperation to support the projects' financing opportunities through e.g. export-import banks.  
**2.3.** Ongoing assessments of Greenland's tax and royalty model including benchmark analyses.  
**2.4.** Increase communication with licensees on laws and investment conditions.

## UN Sustainable Development Goal 8.3 Promote policies to support job creation and growing enterprises

We must promote development-oriented policies that create decent jobs and support productive activities, entrepreneurship, creativity and innovation. We must also support the growth and formalization of micro, small and medium-sized enterprises, including through access to banking.



### Greenlandic Indicators

- 2.i.2.** Increased number of people employed in the mineral resources industry divided by gender.

### Greenlandic Initiatives

- 2.14.** Strengthening societal sustainability by reassessing the IBA agreements with the aim of establishing simple and transparent IBA agreements where all terms can be qualified and at the same time are aligned with the SIA.

## UN Sustainable Development Goal 9.3 Increase access to financial services for small businesses

We need to give small businesses access to banking, including access to affordable loans. This is especially true in developing countries. Small businesses must be better integrated into markets and value chains.



### Greenlandic Indicators

- 2.i.3 More meetings between the mineral resources industry and investment funds.
- 2.5. Ongoing facilitation of meetings between investment funds and the mineral resources industry.
- 2.6. Development of a certification system for small-scale licensees in order to increase the value of the individual mineral.
- 2.7. Work for targeted tax agreements when there is a concrete need and such an agreement that can support the mineral resources industry.

## UN Sustainable Development Goal 16.5 Significantly reduce corruption and bribery

We must significantly reduce corruption and bribery in all its forms.



### Greenlandic Indicators

- 2.i.4. Proportion of people who have been in contact with a public official at least once and who paid a bribe to a public official or who were asked for a bribe by a public official in the last 12 months.

### Greenlandic Initiatives

- 2.9. Update of the anti-corruption policy of the Ministry.

## UN Sustainable Development Goal 16.6 Develop effective, accountable and transparent institutions

Develop effective, accountable and transparent institutions at all levels.



### Greenlandic Indicators

- 2.i.5. Shorter processing time for applications.

### Greenlandic Initiatives

- 2.10. Increased digitalization of administrative processes, including application processes.
- 2.11. Updating of license procedures, standard terms and conditions, etc. in order to increase the flexibility of case processing, including increased communication with the industry about these.
- 2.12. Implementation of a pilot project with the MLSA's physical presence in South Greenland during the field season.
- 2.13. Conducting an analysis of the organizational structure of the Mineral Resources Administration (Department and Board) and possible implementation of a new organizational structure.



## UN Sustainable Development Goal 17.14 Strengthen the coherence of sustainable development policies

Improve the coherence of policy decisions to strengthen sustainable development.



### Greenlandic Indicators

2.i.6. Coherence between political decisions and budget allocations.

### Greenlandic Initiatives

2.8. Increase ad-hoc cooperation between public authorities to support synergies between industries and, among other things, strengthen the infrastructure within transportation and internet communication.

## UN Sustainable Development Goal 17.17 Encourage effective partnerships

We will promote and encourage partnerships across the public sector, private industry and civil society. This will be done by building on our experience with partnerships and their resourcing strategies.



### Greenlandic Indicators

2.i.7. Number of meetings between the public industry, the mineral resources industry, subcontractors and/or the general public.

### Greenlandic Initiatives

2.15. Ongoing facilitation of meetings between the public sector, the mineral resources industry, subcontractors and/or the public.

2.16. Facilitation of an annual investment conference for global investors with the aim of creating insight into opportunities in Greenland.

## Focus area 3: Critical Minerals

## UN Sustainable Development Goal 8.1 Create sustainable economic growth

We must maintain economic growth in accordance with national circumstances, and in particular ensure an annual economic growth of at least seven percent in the least developed countries.



### Greenlandic Indicators

3.i.1. Growth in share of exploration expenditure.

### Greenlandic Initiatives

3.4. Provide information about Greenland and support funding opportunities through the Minerals Security Partnership (MSP) Forum.

## UN Sustainable Development Goal 17.6 Knowledge sharing and cooperation for access to science, technology and innovation

We must improve research cooperation between countries in the North and South, between countries in the South, and across both regionally and internationally. Cooperation must provide access to science, technology and innovation, and it must also improve general knowledge sharing, on mutually agreed terms. This includes through improved coordination between existing collaborations, especially at the UN level, and through global cooperation for technology exchange.



### Greenlandic Indicators

- 3.i.2. The Mineral Resources Authority contributes to several scientific and/or technological cooperation agreements and programs between countries, divided by type of cooperation.

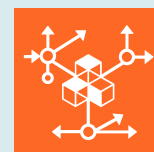
### Greenlandic Initiatives

- 3.1. Implementation of the strategic cooperation with the EU on sustainable value chains, which will secure buyer markets for Greenlandic mineral resources.
- 3.2. Working for the renewal of the 2019 agreement between Greenland and the US.
- 3.3. Strengthening international relations to develop projects on critical minerals, the price and supply of which may be subject to political conditions.

## Focus area 4: Mapping and geodata

## UN Sustainable Development Goal 9.4 Empower research and upgrade industrial technology

We need to do more research into industry technologies and upgrade them in all countries, especially in developing countries. By 2030, we need to encourage innovation and significantly more people working in research and development. Both the public and private sectors need to invest more in this.



### Greenlandic Indicators

- 4.i.1. Expenditure on research and development in the mineral resources area through the Finance Act.

### Greenlandic Initiatives

- 4.1. Continued geological mapping on a scale of 1:100,000, prioritizing areas with a commercial interest.
- 4.2. Continued implementation of scientific projects that generate new knowledge for the mineral resource industry to minimize companies' investment risk.
- 4.13. Establishment of a new drill core data system.
- 4.14. Establishment of a new drill core storage facility.
- 4.15. Initiate registration of drill cores that are not yet registered in the system.

## UN Sustainable Development Goal 11.5 Reduce the adverse effects of natural disasters

By 2030, significantly reduce the number of deaths or number of people that are affected by disasters (including water-related disasters), with a focus on protecting the poor and people in vulnerable situations. In parallel, we must significantly reduce direct economic losses in the global economy caused by disasters.



### Greenlandic Indicators

**4.i.2.** By 2026, a strategy for landslide risk assessment must be implemented.

### Greenlandic Initiatives

- 4.6.** Continued monitoring of unstable landslide areas.
- 4.7.** Implementation of a mapping program for landslides.
- 4.9.** Develop a strategy for geoscientific assessment of the risk of landslides.

## UN Sustainable Development Goal 13.3 Build knowledge and capacity to meet climate change

We need to increase the general knowledge and awareness of the possibilities to both slow down global warming and adapt to climate change. This needs to happen at both individual and institutional levels. At the same time, we need to increase our capacity for early prediction and mitigation of damages.



### Greenlandic Indicators

**4.i.3.** By 2030, an information campaign on natural disasters will be carried out.

### Greenlandic Initiatives

- 4.8.** Continued expansion of citizen information in the area of natural disasters, including the establishment of an interactive map with risk assessments and implementation of an information campaign on natural disasters.
- 4.12.** Continue work on the Carbon Capture and Storage (CCS) strategy published in 2023.

## **UN Sustainable Development Goal 17.6 Increase knowledge sharing and access to science, technology and innovation**

We must improve research cooperation between countries in the North and South, between countries in the South, and across both regionally and internationally. Cooperation must provide access to science, technology and innovation, and it must also improve general knowledge sharing, on mutually agreed terms. This includes through improved coordination between existing collaborations, especially at the UN level, and through global cooperation for technology exchange.



### **Greenlandic Indicators**

**4.i.4.** The Mineral Resources Authority is part of several scientific and/or technological cooperation agreements and programs between countries, broken down by type of cooperation.

### **Greenlandic Initiatives**

- 4.3.** Conduct a feasibility study to identify the geophysical data types to be collected and a prioritizing the order of mapping.
- 4.4.** Identification of funding opportunities for regional geophysical surveys and satellite data.
- 4.5.** Continued collaboration with research institutions, e.g. on geological mapping and landslides, and entering new agreements for the continued strengthening of geoscientific competences.
- 4.10.** Increased availability of geoscientific data via the homepage and the Greenland portal.
- 4.11.** Preparation and publication of a gemstone prospecting guide for North Greenland.





NAALAKKERSUISUT  
GOVERNMENT OF GREENLAND



Imaneq 4  
Postboks 930  
3900 Nuuk

[www.govmin.gl](http://www.govmin.gl)  
[www.greenmin.gl](http://www.greenmin.gl)